

BRITISH RAILWAYS

(WESTERN REGION)

(For the use of Employees only)

Notice to Traincrews, etc.

**REVERSIBLE
SIGNALLING BETWEEN
SEVERN TUNNEL EAST
(ABLETON LANE)
AND SEVERN TUNNEL JUNCTION**

**FRIDAY 1 DECEMBER TO
TUESDAY 5 DECEMBER 1989**

**SEVERN TUNNEL EAST (ABLETON LANE)
AND SEVERN TUNNEL JUNCTION**

Between **2200 hours Friday 1 December** and **2200 hours Tuesday 5 December** (and until completion), S&T staff will be carrying out the work detailed in this Notice.

1. Signalling

At Severn Tunnel East

Existing signal N.164 will be repositioned 790 yards towards Bristol, as a 2 aspect signal. Routes will be provided to the Up Tunnel Line and Down Tunnel Line.

New signal N.264 will be provided on the same gantry, and apply to movements from the Up Tunnel Line to the Down Tunnel Line, with Junction indicator 1. New repeating signal N.264R will also be provided.

New signal N.287 will apply to movements from the Down Tunnel Line to the Up Tunnel Line, with Junction indicator 1.

At Severn Tunnel Junction

New signal N.270 will apply to movements to the Down Main Line, with Junction indicator 1.

A new route, with Junction indicator 4, will be provided at signal N.181 for movements to the Down Tunnel Line. New Junction indicator 5 will apply for movements to the Up Main (Gloucester) Line.

New GPL 23 replaces an existing Limit of Shunt on the Down Tunnel Line.

In the Severn Tunnel

New signals N.270R and N.287R will be provided opposite existing signals 168R and 187R respectively.

2. Tunnel Warning Lights

Additional emergency red lights and gradient marker lamps will be provided for movements in the reverse direction, opposite those that already exist.

The existing white light warning indicators at Sudbrook Shaft will be extinguished by any train approaching, regardless of the line or direction of travel.

3. Telephones

The existing telephones to Newport Signal Box will also apply to adjacent signals as follows:—

170 telephone will also apply to 270 Signal.

187 telephone will also apply to 287 Signal.

164 telephone will also apply to 264 Signal.

New telephones will also be provided adjacent to the Patrolman's Lockout instruments.

4. Patrolman's Lockout Instruments

Lockout instruments are provided for the use of Patrolmen. When these have been operated to the "PATROL" position, reversible movements are locked out within the area indicated on the diagram inside the instrument. Under these conditions, movements in the Up direction over Down lines or in the Down direction over Up lines are prevented.

The instruments numbered G1, G3 and G4 will be introduced.

5. Automatic Warning System

New signs will be provided to denote sections of line where special AWS working applies. Between the commencement and the termination of special AWS working, AWS will not be provided at any reversible signal. AWS warnings which apply to movements in the opposite direction will not be suppressed and must be cancelled.

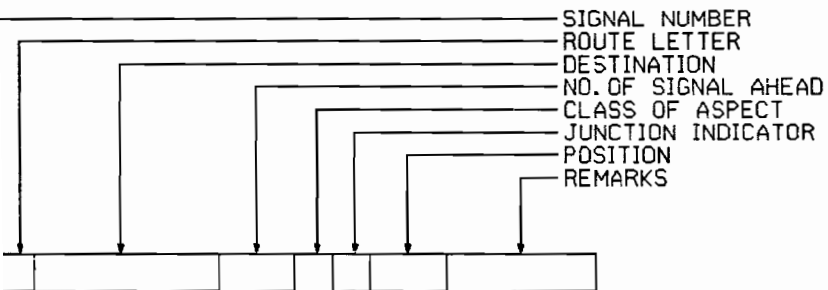
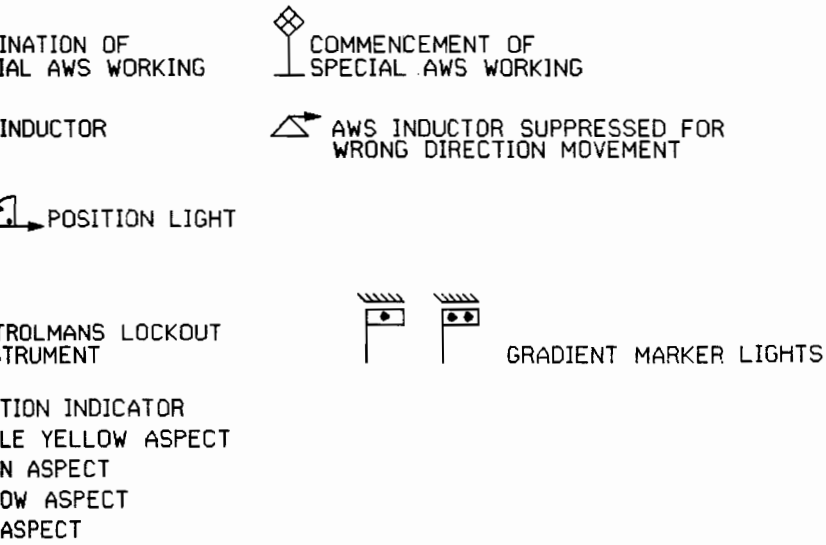
6. Permanent Way Alterations

The new crossovers 600 and 602 at Ableton Lane will be unclipped and brought into use.

125 House
SWINDON
November 1989

R. J. Poynter
Regional Operations Manager
ref. 95/TS/1738

KEY TO SYMBOLS



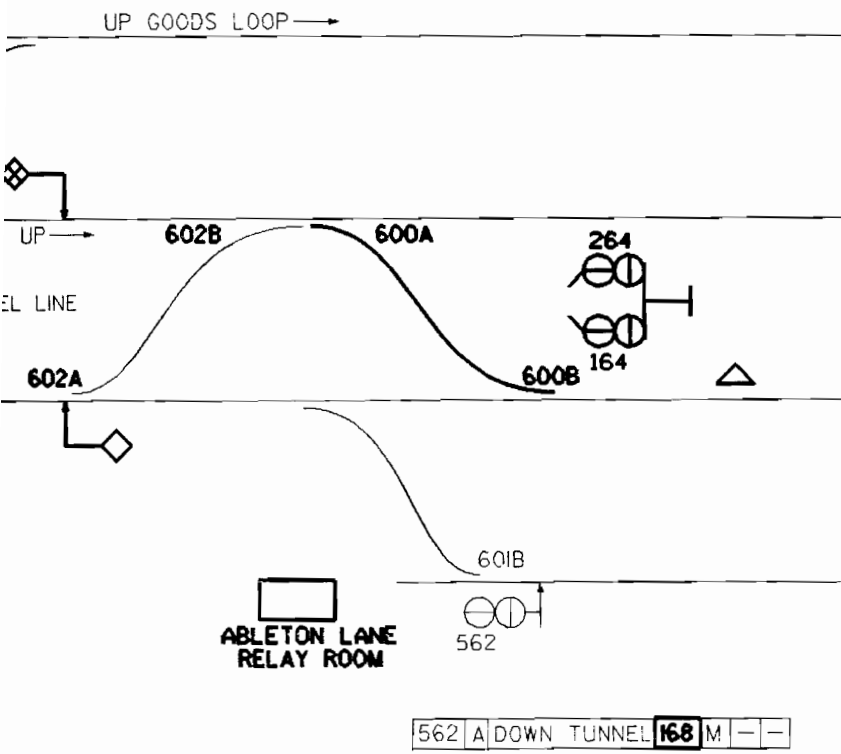
NOT TO SCALE

TUNNEL JCN TO SEVERN TUNNEL EAST (ABLETON LANE)

POSITION OF BI-DIRECTIONAL SIGNALLING

A	DOWN TUNNEL	168	M	J	(D)
---	-------------	-----	---	---	-----

A	DOWN TUNNEL	168	M	-	-
B	UP TUNNEL	270	M	J	(4)



562	A	DOWN TUNNEL	168	M	-	-
-----	---	-------------	-----	---	---	---

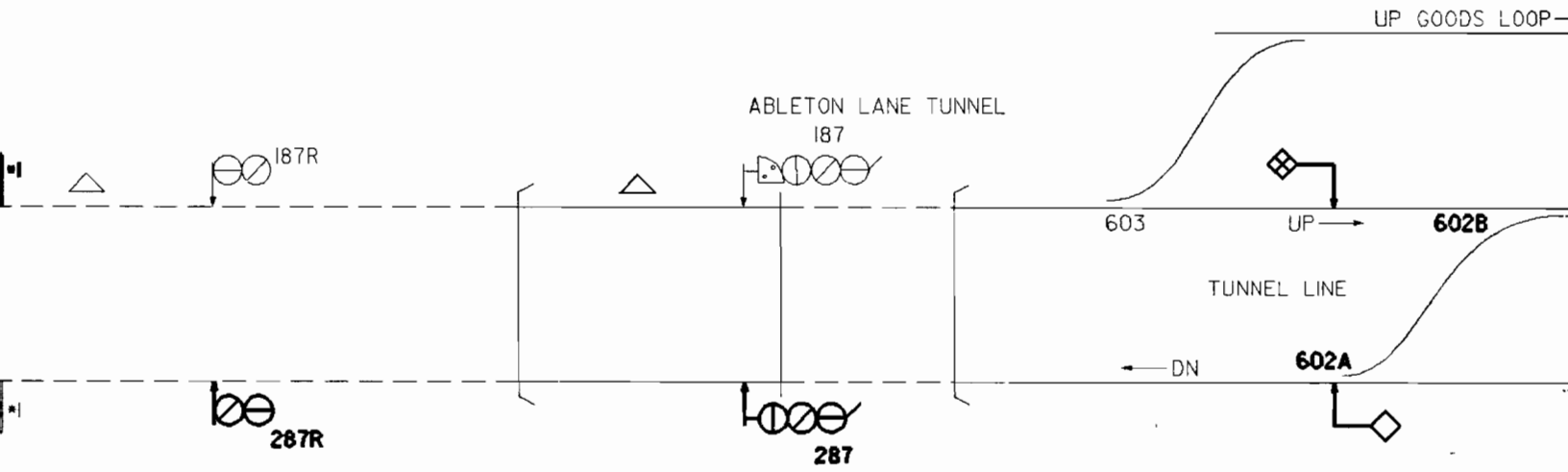
- TERMINATION SPECIAL AWS
- AWS INDUCTOR
- OR
- PATROLMAN INSTRUMENT
- JUNCTION IN DOUBLE YELLOW
- GREEN ASPECT
- YELLOW ASPECT
- RED ASPECT

NOTES:

SEVERN TUNNEL
INTRODUCTORY

264	A	DOWN TUNNEL	168	M	J
-----	---	-------------	-----	---	---

164	A	DOWN TUNNEL	168	M	J
	B	UP TUNNEL	270	M	J



EMERGENCY RED LIGHTS ILLUMINATED
 IN TUNNEL EMERGENCY WIRE BROKEN
 EMERGENCY SWITCH ON PANEL OPERATED.

SEVERN TUNNEL EAST
 INTERLOCKING

ABLETON
 RELAY

287	A	UP TUNNEL	101	M	J	(1)
-----	---	-----------	-----	---	---	-----

SEVERN TUNNEL

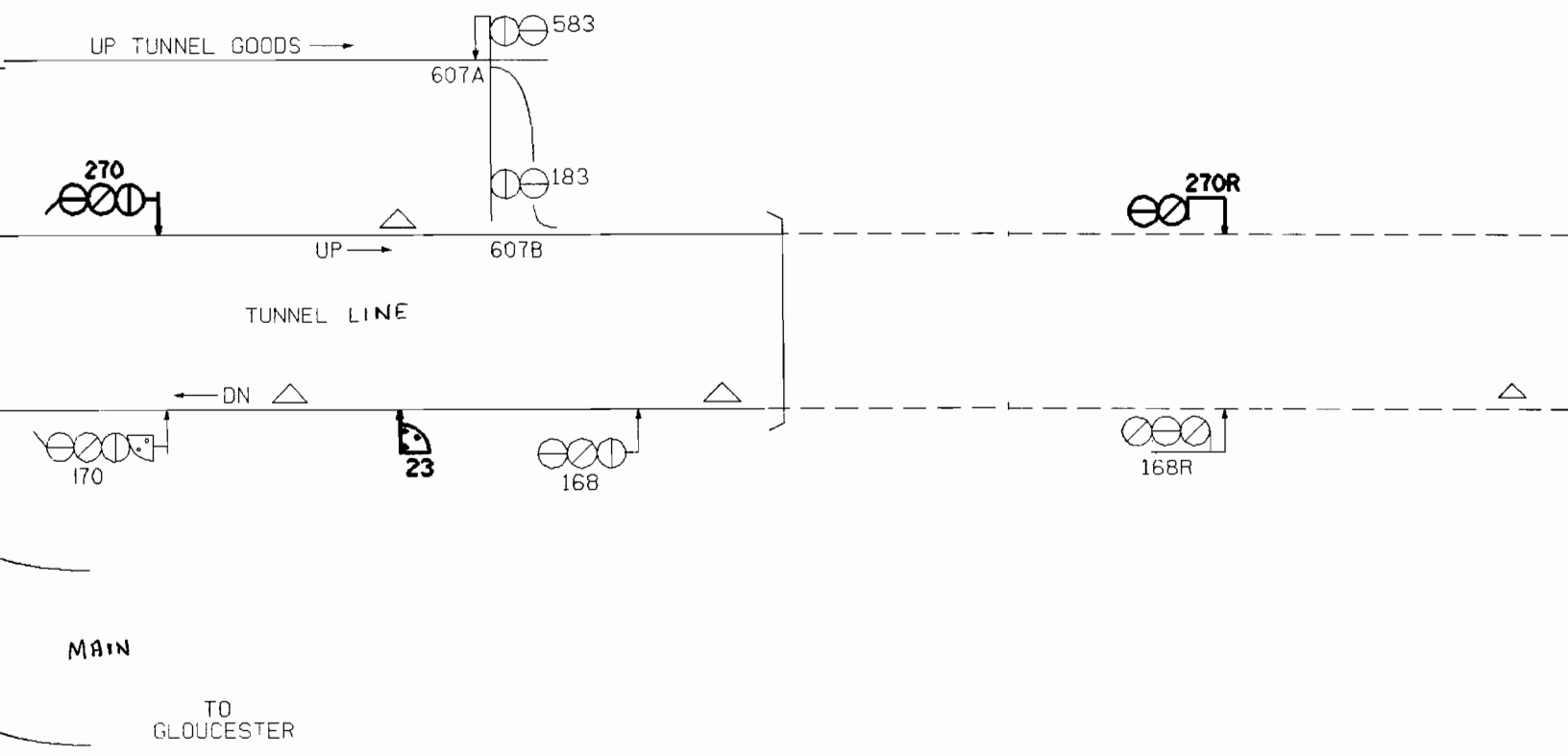
PATROLMANS
LOCKOUT G3

SUDBROOK SHAFT



□= WARNING LIGHTS

*1 EMERGENCY RELEASE
WHEN TUNNEL
OR EMERGENCY

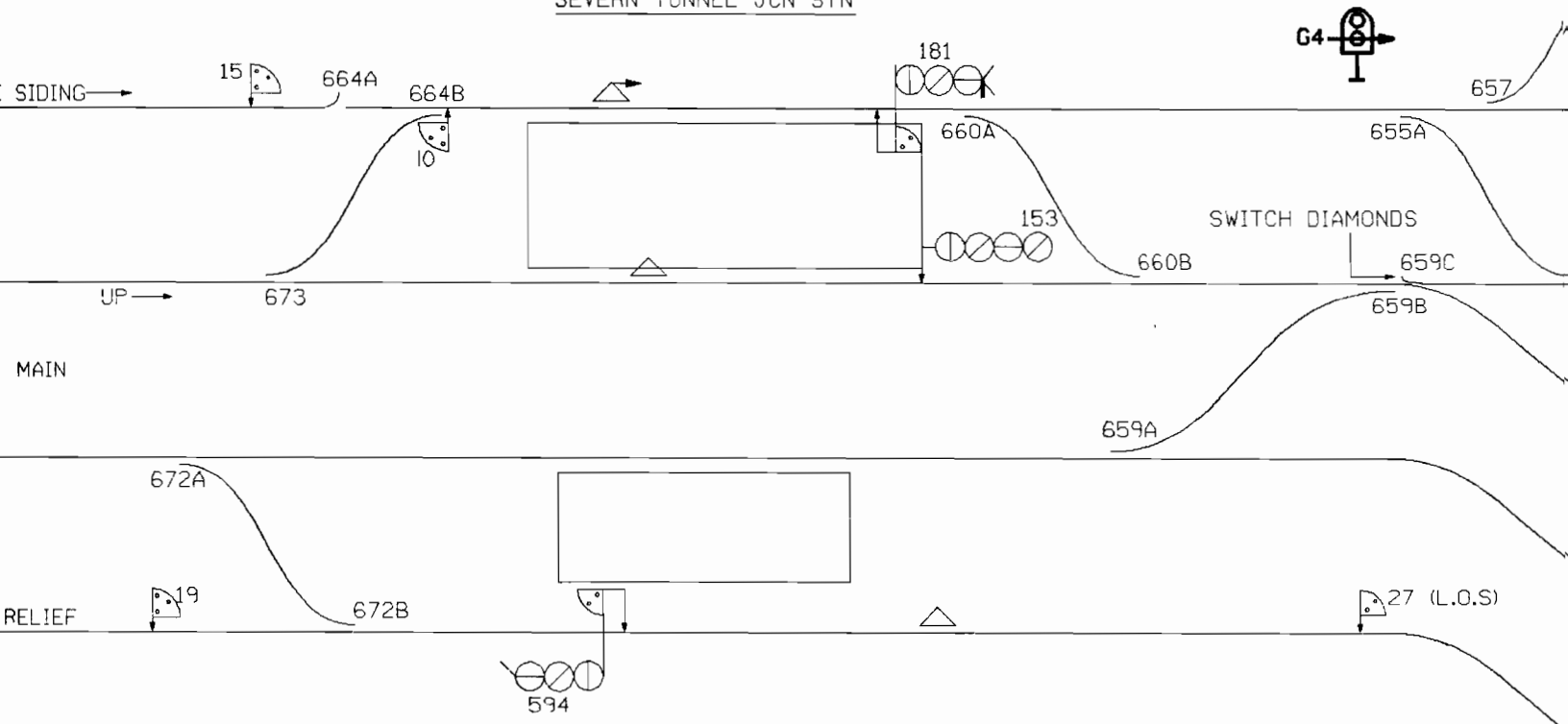


DOWN MAIN | 196M | J1 | (1)

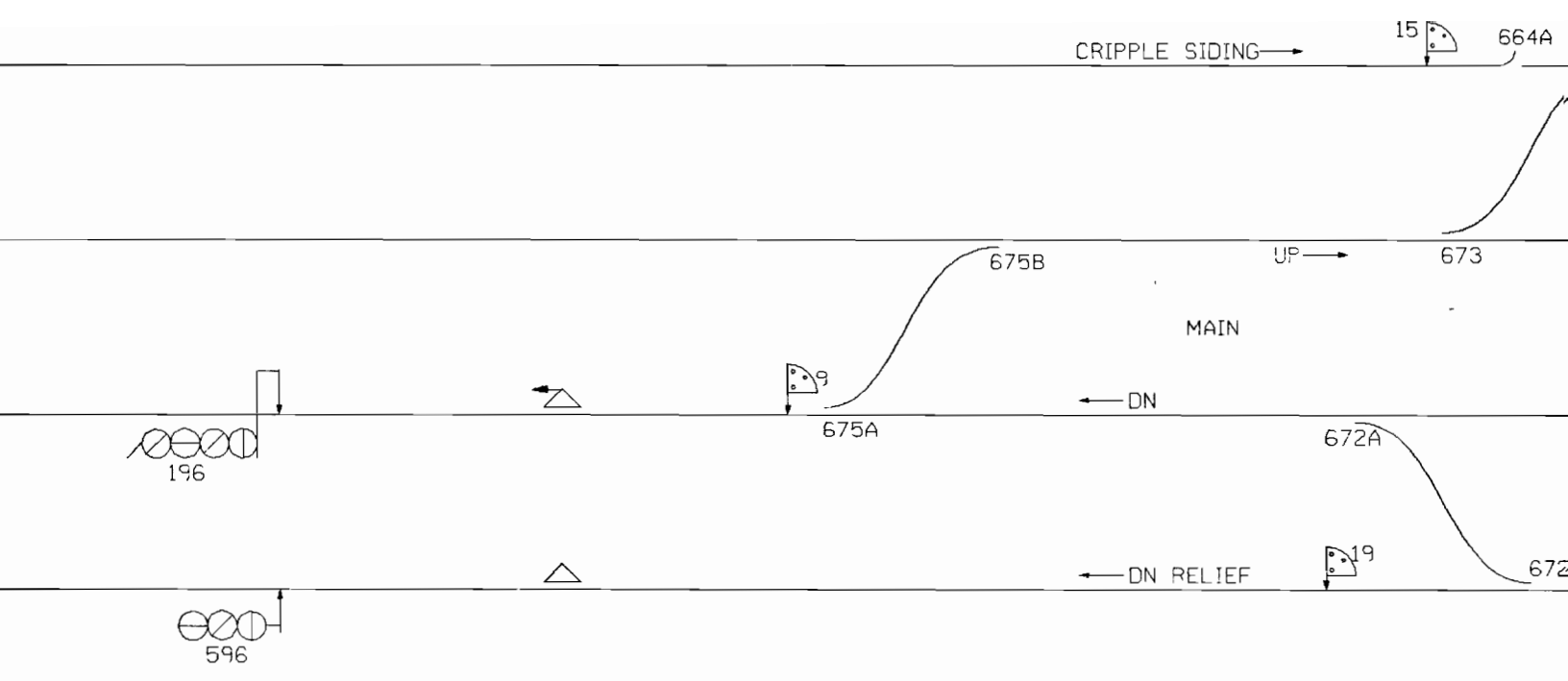
SEVERN TUNNEL JCN
INTERLOCKING (J)



SEVERN TUNNEL JCN STN



	A	UP TUNNEL GOODS	583	W/PL	J1	(1)
	B	UP TUNNEL	183	M	-	-
181	C	DOWN TUNNEL	23	PL	-	-
	D	DOWN TUNNEL	287	M	J1	(4)
	E	UP MAIN	UM147	M	J1	(5)



5 December (and until Notice.

, as a 2 aspect signal.

to movements from the . New repeating signal

l Line to the Up Tunnel

th Junction indicator 1.

I N.181 for movements vements to the Up Main

unnel Line.

signals 168R and 187R

rovided for movements in

be extinguished by any

ent signals as follows:—

's Lockout instruments.

ese have been operated in the area indicated on s in the Up direction over

l AWS working applies. orking, AWS will not be vements in the opposite

l and brought into use.

Poynter
onal Operations Manager
95/TS/1738

